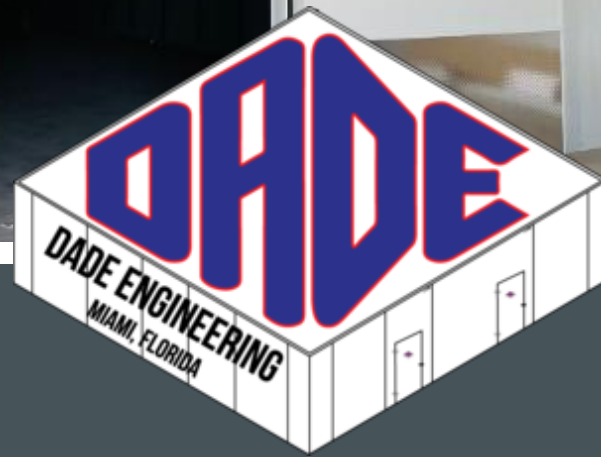


*“Full Service Cold Storage Panel  
Manufacturer Since 1953”*



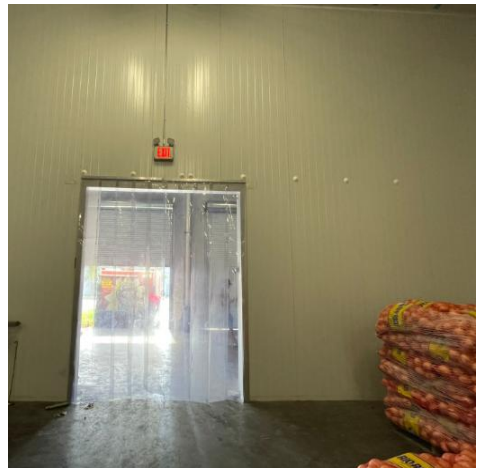
Industrial & Commercial Panels  
Refrigerated Cold Storage / Warehouses



[www.dadecoolers.com](http://www.dadecoolers.com)

© Copyright 2025 | All Rights Reserved





# WHAT ARE INDUSTRIAL PANELS?

## Refrigerated Warehousing:

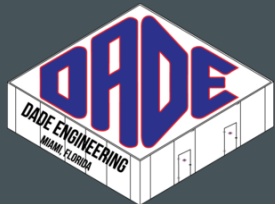
Industrial panels are insulated panels specifically designed and constructed for use in the **walls, ceilings, and floors** of cold storage facilities and warehouses.

They are an integral component in the structure of the building and play a crucial role in creating and maintaining controlled environments for the storage of temperature-sensitive goods.

## DADE INDUSTRIAL PANELS ARE....

**Insulated metal** panels **composed steel skins** laminated to a minimum of **1.6" polyisocyanurate foam core** (min 2.3 pcf density) with an R-Value rating of 35.5.

[www.dadecoolers.com](http://www.dadecoolers.com)



# FEATURES & BENEFITS



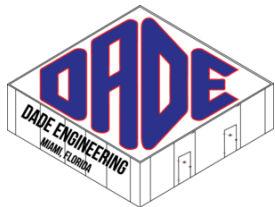
## Why is Cold Storage Needed?

Serve as crucial spaces for industrial preservation and refrigeration across diverse industries.

### Applications:

- Biological
- Industrial
- Military
- Flowers/Nursery's
- Foodservice
- Aquatic products
- Animal Husbandry
- Medical / Pharmaceutical
- Logistics/Shipping
- Wineries
- Craft Breweries
- Hospitality
- Farming
- Restaurants
- Specialty Refrigerated Distribution
- Food Processing
- Entertainment/Bars
- Institutional
- Education

[www.dadecoolers.com](http://www.dadecoolers.com)



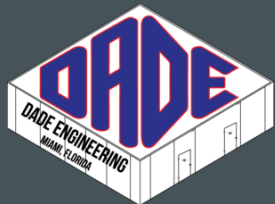


# WHAT MAKES DADE PANELS DIFFERENT?

1. All Dade Engineering products undergo **thorough testing** at our advanced manufacturing facilities to ensure accuracy and reliability before they are pre-assembled and shipped.
2. Installation diagrams are conveniently attached to every cooler, and each panel is clearly labeled for **easy identification during setup**.
3. We utilize high-quality **resources** to create **airtight sealed panels**, ensuring optimal performance.
4. Our **dedicated team** is always ready to assist you throughout your customized project, providing support from initial site surveys, through obtaining necessary permits, to complying with relevant codes and inspections. We do NOT charge for CAD drawings.
5. **Safety** – EISA, UL, UL7, NSF approved and City of Houston, TX code compliant. Numerous installation safety test standards approvals.



[www.dadecoolers.com](http://www.dadecoolers.com)

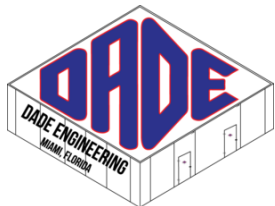


# FEATURES & BENEFITS



- **Customized:** Versatile for any configuration, able to provide a quote for any project no matter how big or small
- **Quick Installation:** Easy to maintain, interior rounded concave corners does not collect debris and easy to clean
- **Relocatable:** Easily removable and configurable - wall, floor, corner and ceiling joints
- **Cost-Efficient:** Made to measure, avoids waste, up to 39 ft. in panel length and usable width of 1000mm / 39 3/8"
- **Durable:** Resistant to harsh environmental elements, panel thickness from 1 9/16" up to 6"
- **Aesthetics:** Pleasing appearance, choice of finishes - standard or flat, optional panel thickness as well as coatings
- **Insulation:** High thermal insulation capacity, panel thickness choices ranging from 40mm/1 9/16" up to 150mm/6"
- **Safe & Tested:** Mechanically strong, fire tested (ASTM E 84) and strength tested (STEM E 8) for optimal & safe performance
- **Stability:** Dimensionally stable, up to 39 ft. in panel length and usable width of 1000mm/39 3/8"
- **Seal:** Water vapor tight, minimum 2.3 pcf density of 1.6" polyisocyanurate foam core with an R-Value rating of 35.5

[www.dadecoolers.com](http://www.dadecoolers.com)



# FEATURES & BENEFITS



**Pre-engineering panel** with an **air-tight channel tooling** is essential to effectively optimize the cold storage solutions you need for your facility.

This innovative design ensures that **temperature control and energy efficiency are maximized**, ultimately improving the overall performance of your cold storage operations.

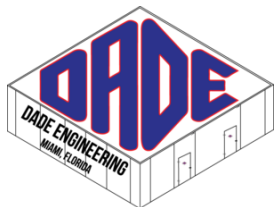
**All hardware is chrome plated** and designed to perform under the harshest work environments.

The chrome plating provides a **hard, durable finish that enhances corrosion resistance, ensuring longevity and reliability even in extreme conditions.**

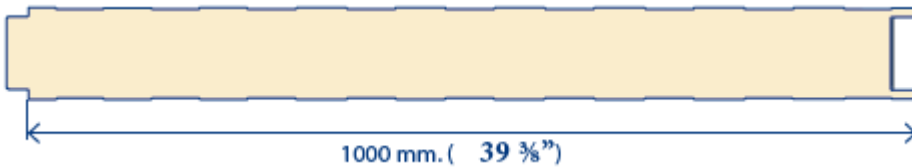
This resilient coating protects the hardware from wear and tear, making it **ideal for industrial applications** where exposure to moisture, chemicals, and physical abrasion is common.

The hardware not only **prioritizes functionality** but also **maintains structural integrity**, allowing it to withstand heavy loads and rigorous use without compromising performance.

[www.dadecoolers.com](http://www.dadecoolers.com)



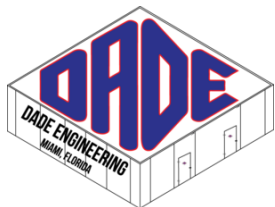
# CONSTRUCTION



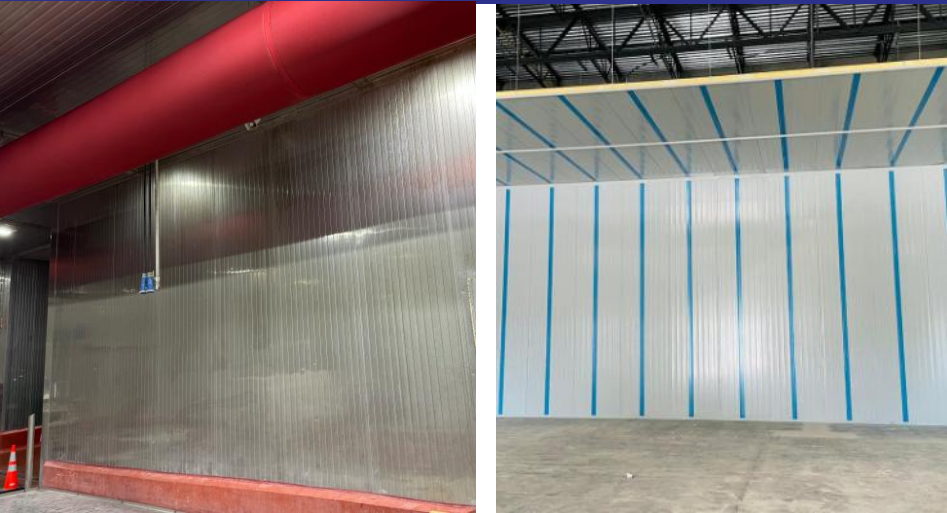
Specifications	Construction Options
<b>Panel Thickness</b>	From 40mm   9/16" up to 150mm / 6" inches
<b>Useable Width</b>	1000mm / 39 3/8" inches
<b>Length</b>	Up to 11,900mm / 39 feet
<b>Application</b>	Cold Room Storage – All industries
<b>Outer Face Thickness</b>	Gauge 26 / 24 / 22 (.05, .06, .07mm)
<b>Inner Face Thickness</b>	Gauge 26 / 24 / 22 (.05, .06, .07mm)
<b>Exterior Face</b>	G90 Galvanized or AZSO Aluminum-Zinc, Coated Steel in 26 GA and/or above
<b>Interior Face</b>	G90 Galvanized or AZSO Aluminum-Zinc, Coated Steel in 26 GA and/or above
<b>Coatings</b>	Polyester-25um / 1 mil, PVDF-25um/35um / 1mil/1.38 mil, Granite HDX / SDP 50 2.16ml
<b>Outer Ribbing</b>	Standard / Flat
<b>Inner Ribbing</b>	Standard / Flat
<b>Core Type</b>	Polyisocyanurate (PIR)
<b>Core Density</b>	40kg/m / 2.3 PCF / R-Value 35.5



[www.dadecoolers.com](http://www.dadecoolers.com)



# FINISH & DOOR OPTIONS



## Door Finish Options

- 26 Gauge Acrylume® Stucco Embossed Finish
- 24 Gauge Smooth Stainless Steel
- 26 Gauge Stucco Embossed White Pre-Painted Galvanized Steel



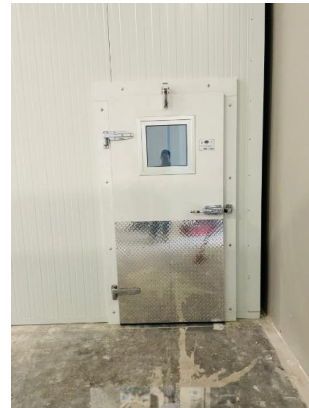
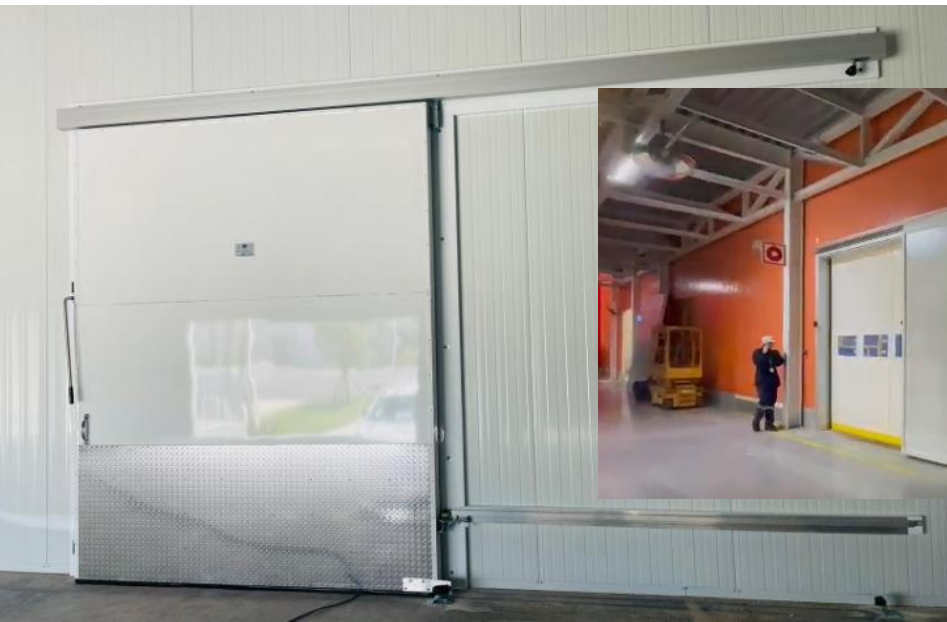
Gray, Stainless Steel, White or Black

## Additional Options

- High Speed Doors
- High Speed Doors with Heaters
- Bumper Accessories

## Door Video Examples

1. [Door Link](#)
2. [Door Link](#)



# STATE OF THE ART DIGITAL CONTROLS



## How Can State of the Art Digital Controls Assist?

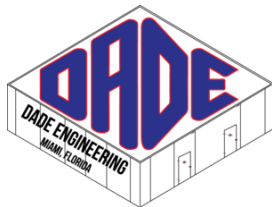
Dade coolers, freezers and storage rooms are meticulously constructed with state-of-the-art digital controls:

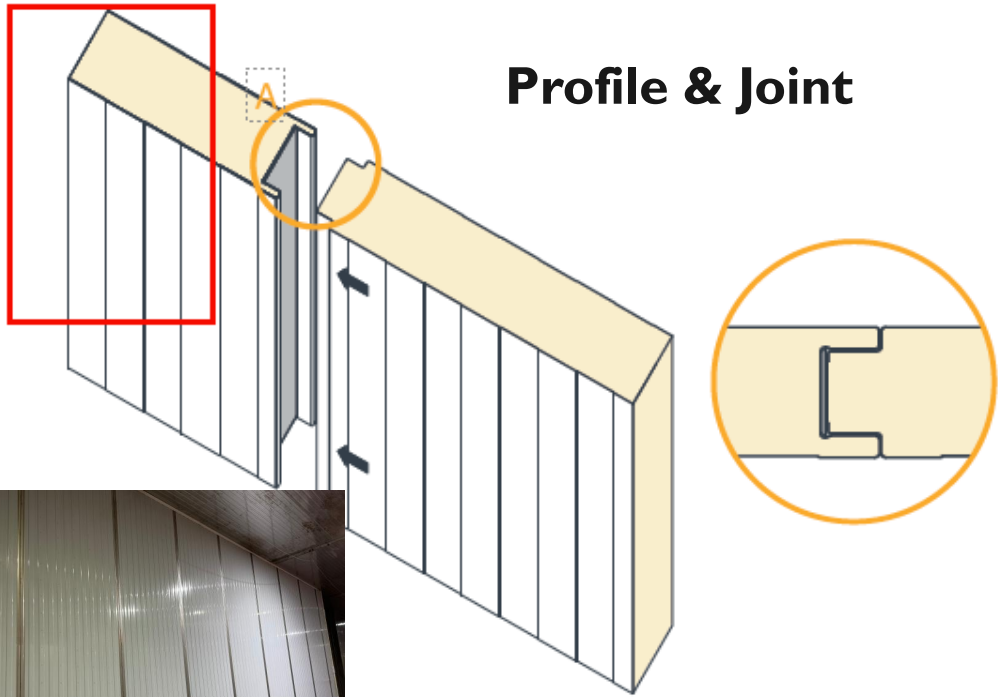
- Temperature reading controls
- Effective door alarms
- Reliable light monitors

These features work together to provide an optimal storage environment for your perishable goods, enhancing both safety and efficiency.

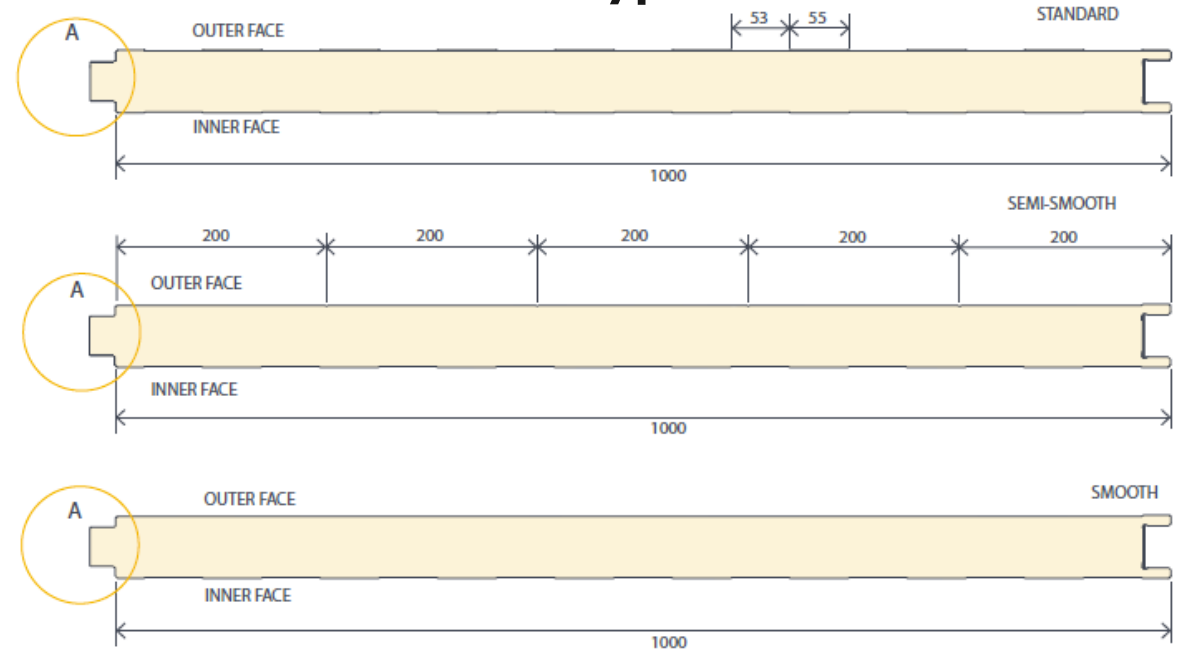
Your cold storage unit will meet your operating requirements and applicable codes.

[www.dadecoolers.com](http://www.dadecoolers.com)





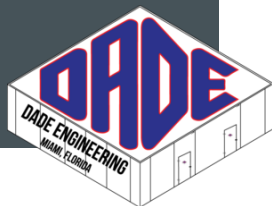
### Panel Type



## DADE PANEL DESIGNS PANEL & JOINT

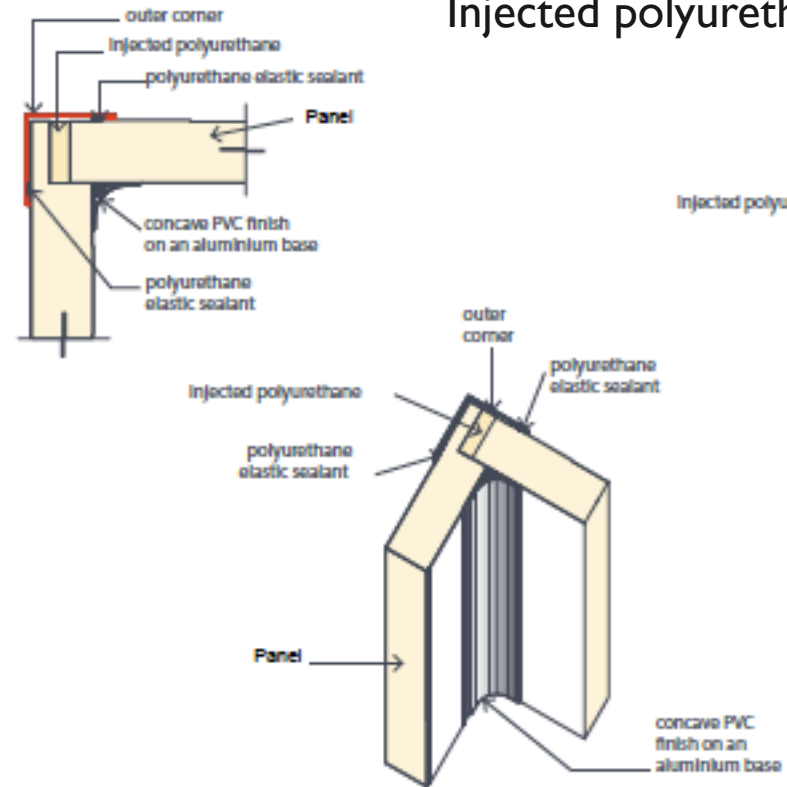
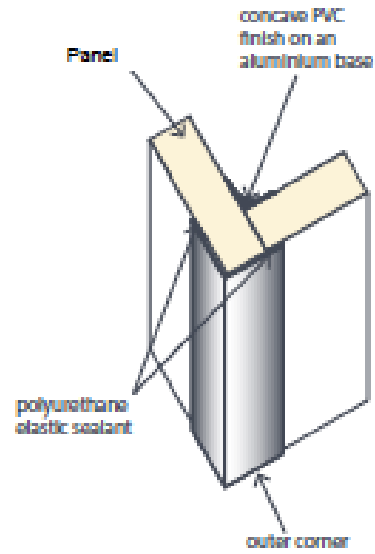
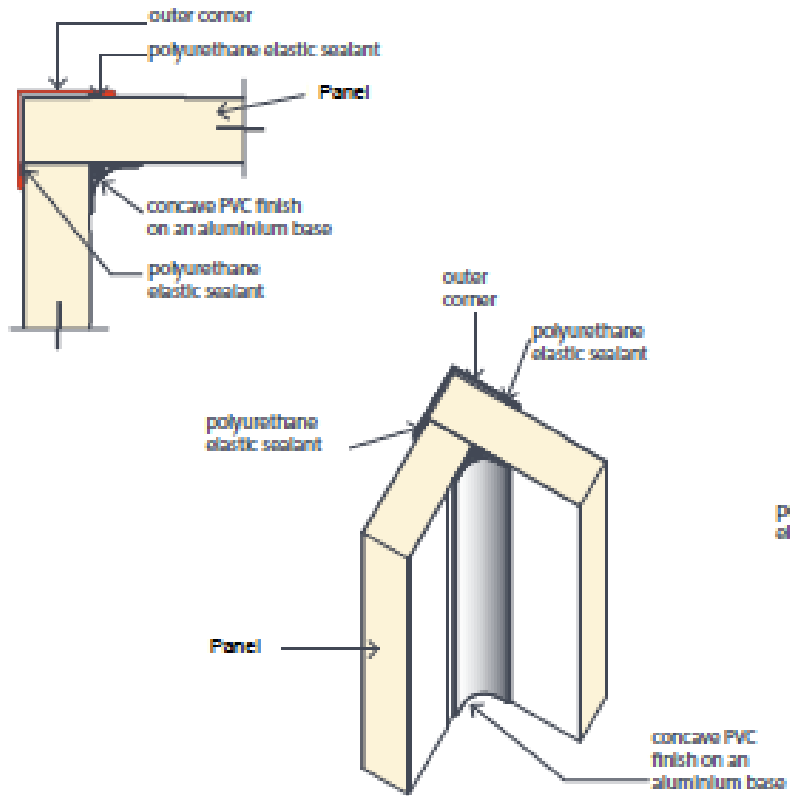
- Standard
- Semi- Smooth
- Smooth

[www.dadecoolers.com](http://www.dadecoolers.com)

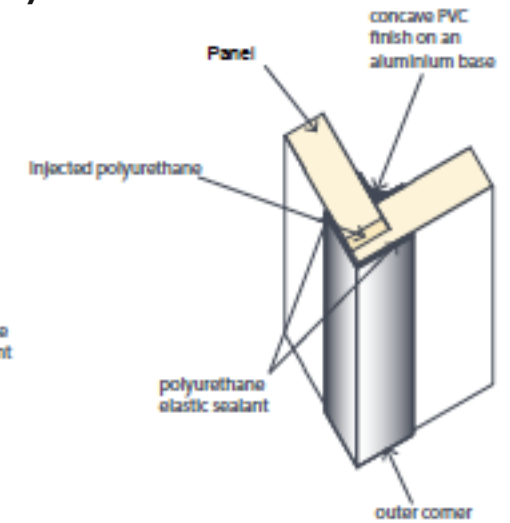


# PANEL & JOINT DETAILS

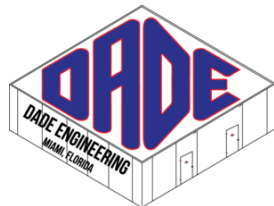
## Corner Joint for Cold Storage (Room temperature <0 degrees C)



Injected polyurethane

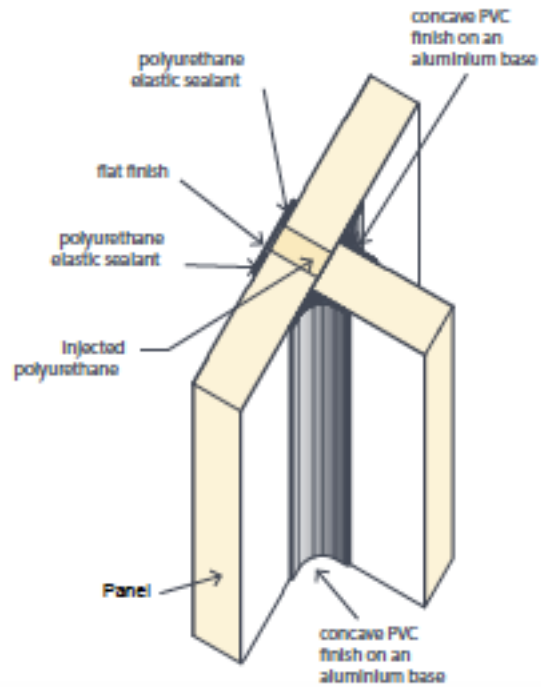
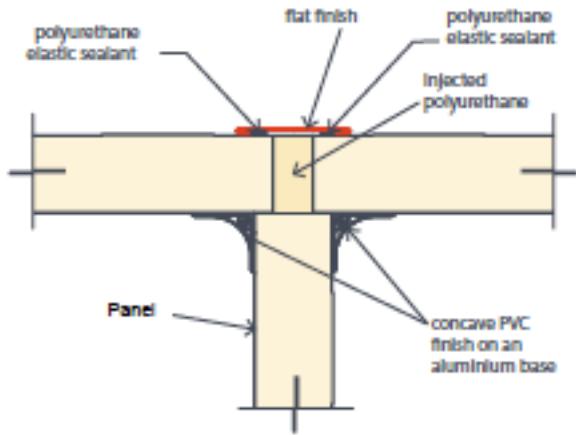


[www.dadecoolers.com](http://www.dadecoolers.com)

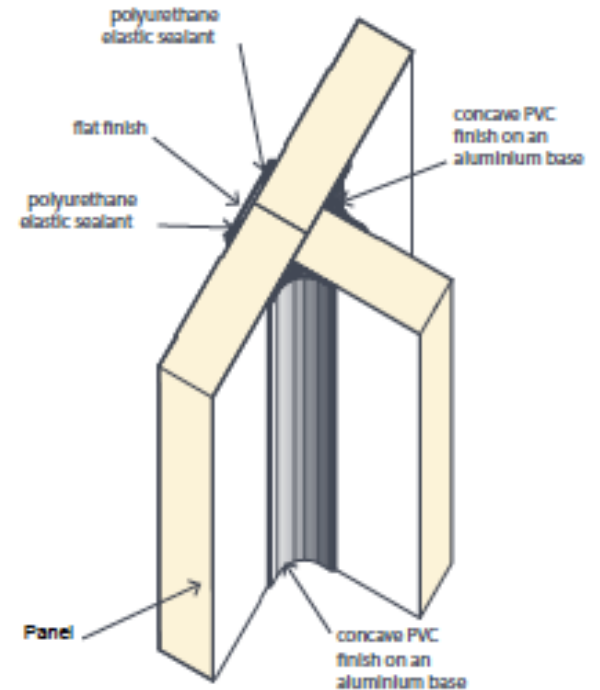
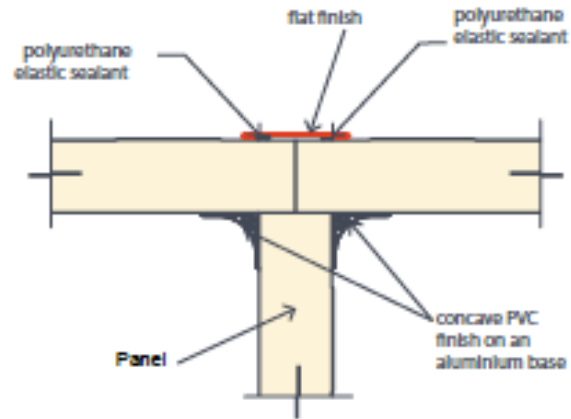


# PANEL & JOINT DETAILS

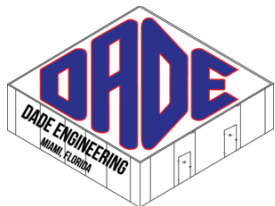
## Double Corner Joint for Cold Storage (Room temperature <0 degrees C)



Injected polyurethane

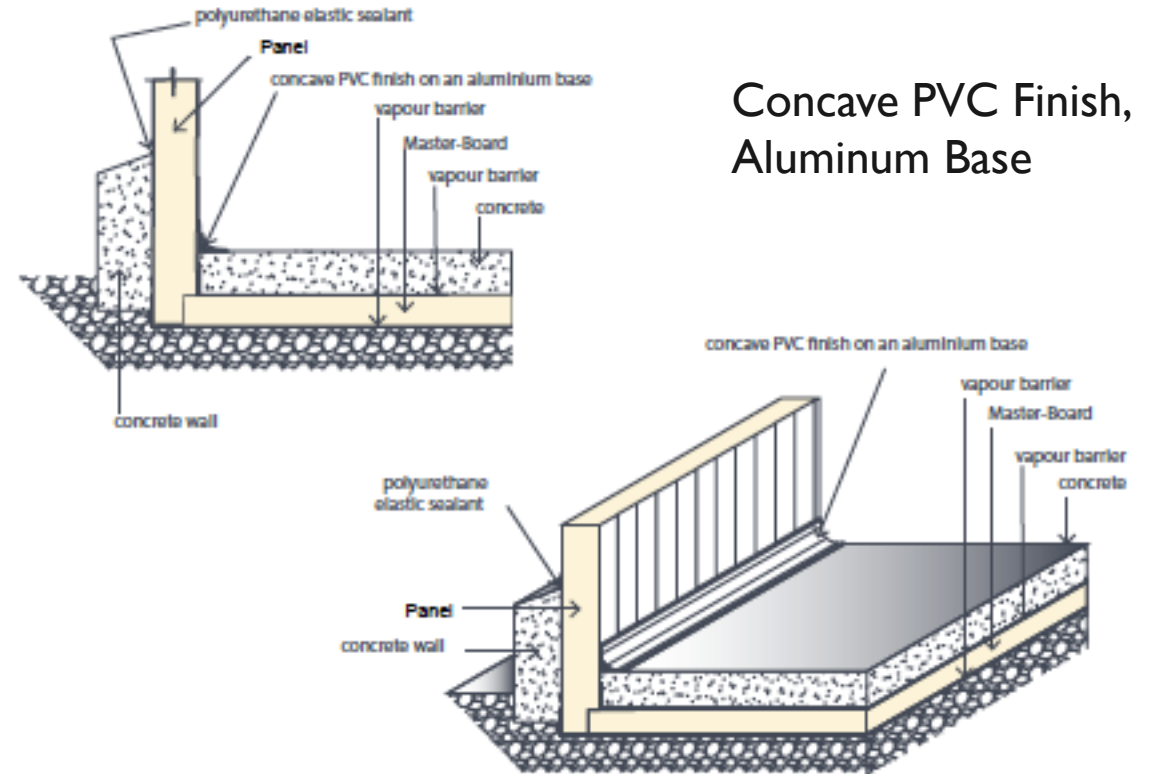
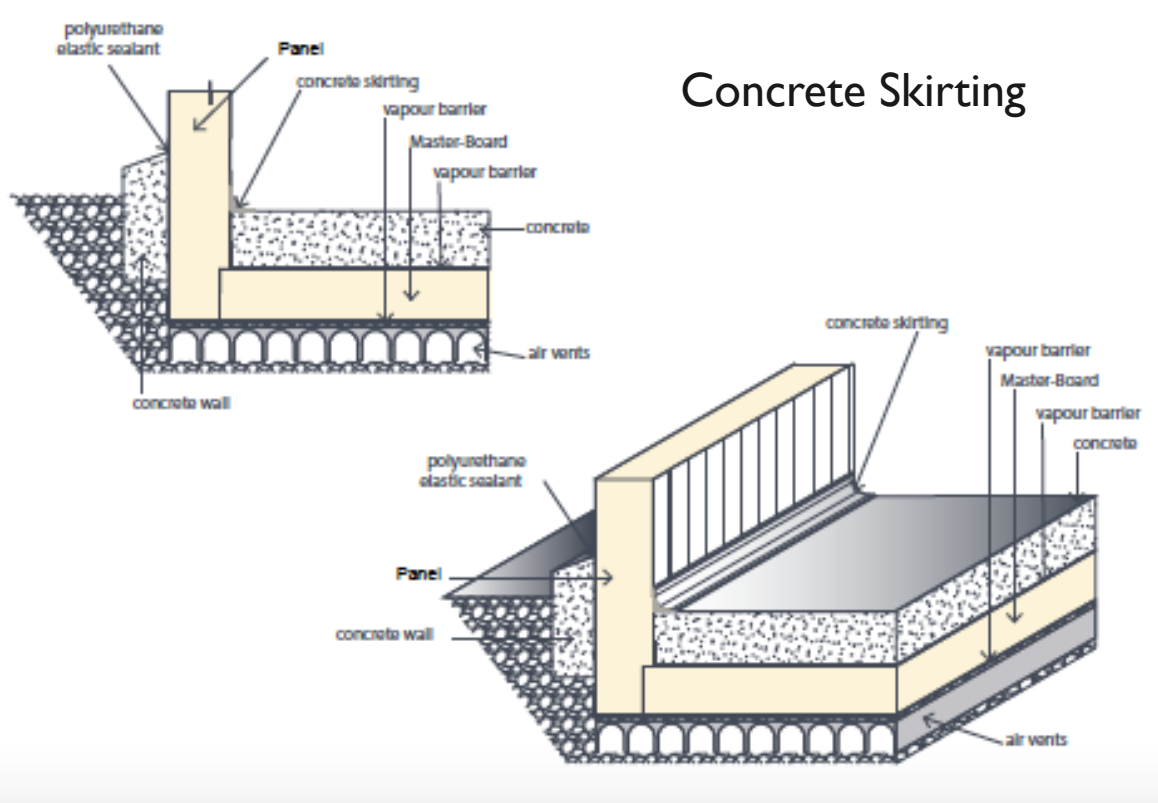


[www.dadecoolers.com](http://www.dadecoolers.com)



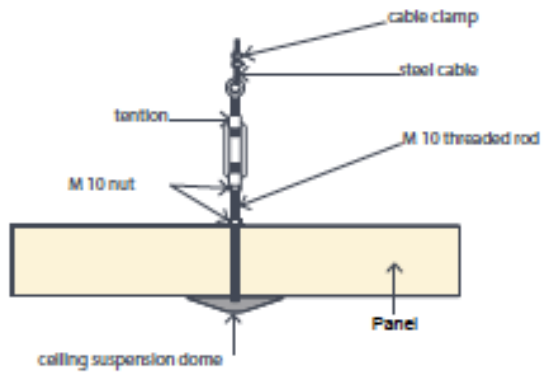
# INSULATED FLOOR SYSTEMS

## Wall-Floor Joint for Cold Storage (Room temperature $<0$ degrees C)

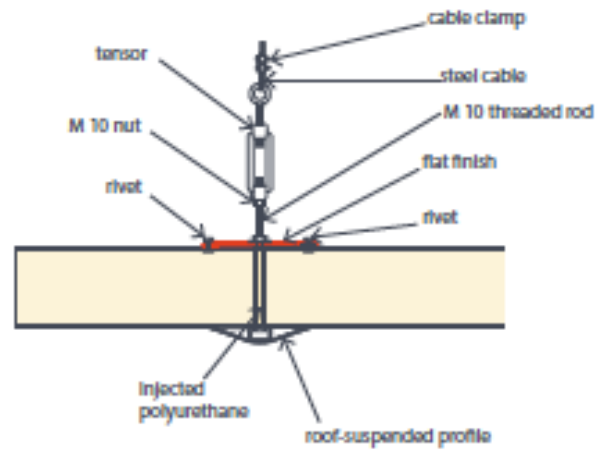
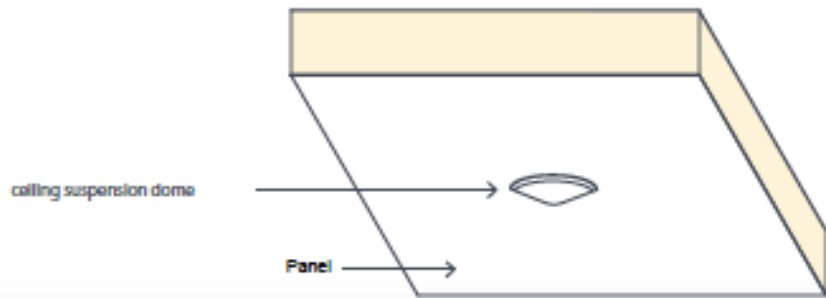


# CEILING HANGING SYSTEMS

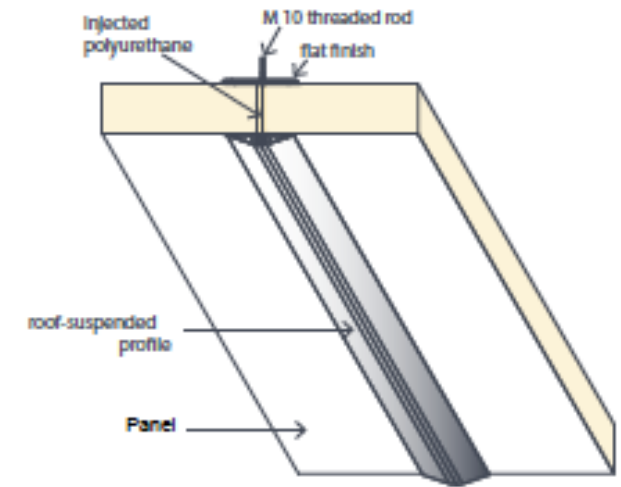
## Longitudinal Suspension, Ceilings for Cold Storage



Ceiling Point Suspension



Cold Room Ceiling Longitudinal Suspension



## Corner and Floor Molding Systems

- Coved Corner Trims
- Base Board



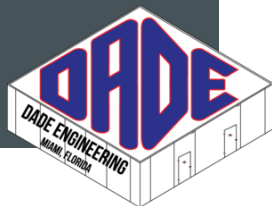
## Ceiling Suspension Accessories



## ACCESSORIES & INSTALLATION OPTIONS

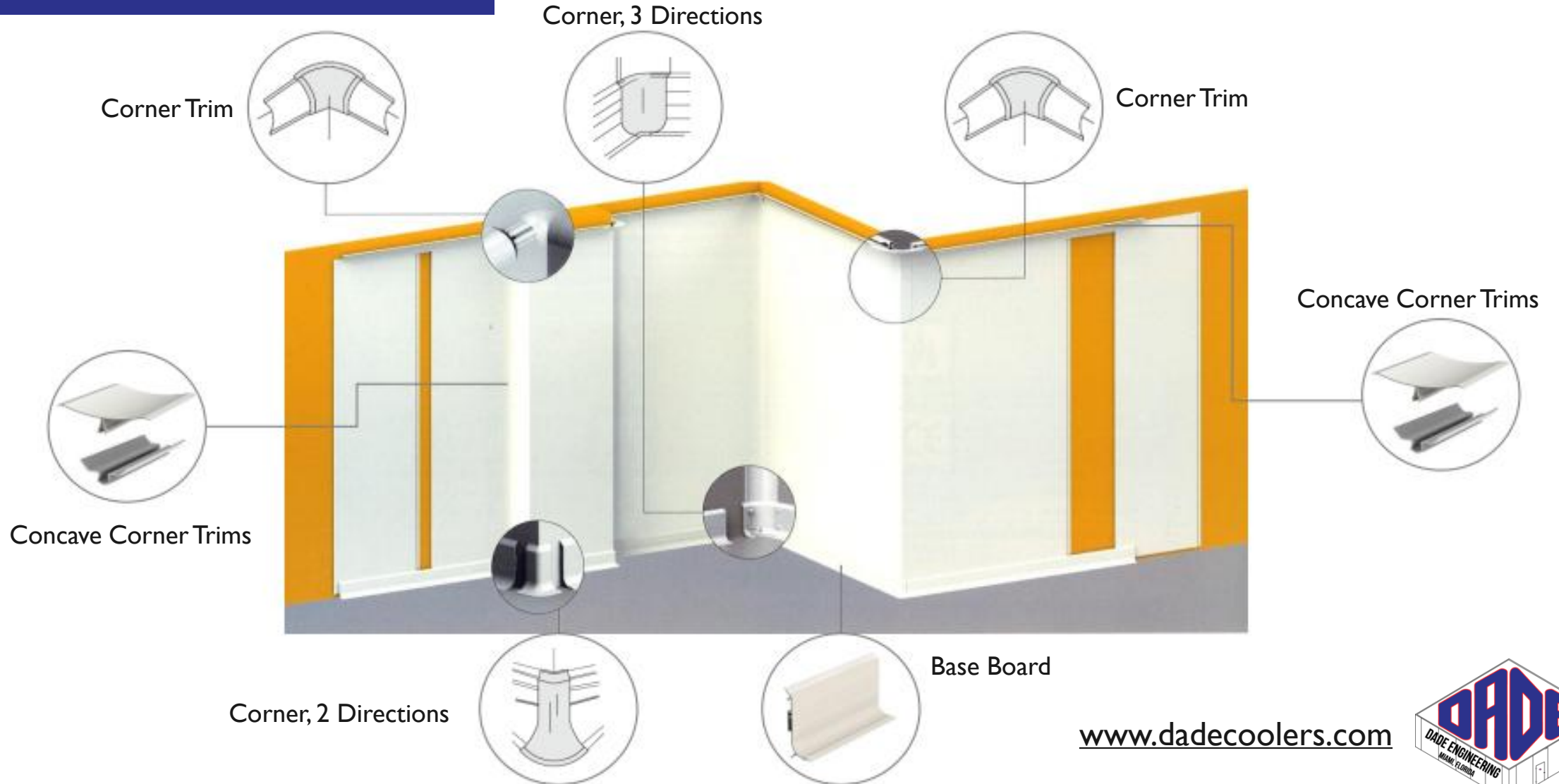
- Molding Systems – Coved Corner Trims & Base Boards
- Ceiling Suspension Accessories

[www.dadecoolers.com](http://www.dadecoolers.com)

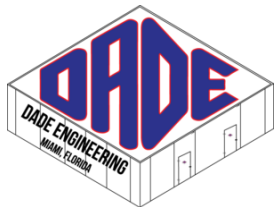


# INSTALLATION

## Schematic of Cold Storage, Components

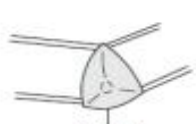


[www.dadecoolers.com](http://www.dadecoolers.com)

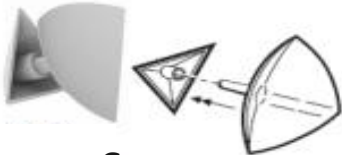


# CORNER MOLDING SYSTEMS

## Coved Corner Trims, PVC with Aluminum Base



Corner  
2 Directions



Corner  
3 Directions



Corner  
Trimming



Extreme  
Cover

NSF Trims

3.5"  
(In stock)

2.5"  
(Special Order)

-15%



Aluminum Base

PVC

Wide  
(in stock)

Trim  
(Special Order)

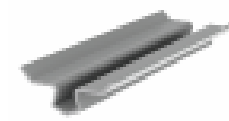
Trim  
(Special Order)

Solid  
(Special Order)

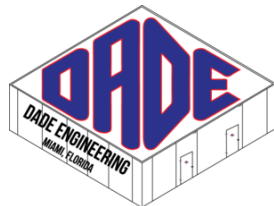
-25%

-45%

-35%



[www.dadecoolers.com](http://www.dadecoolers.com)

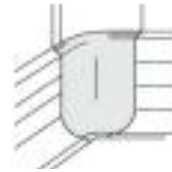


# BASE BOARD MOLDING SYSTEMS

## Base Board, PVC (Special Order)



Corner  
2 Directions



Corner  
3 Directions



Corner  
Trimming

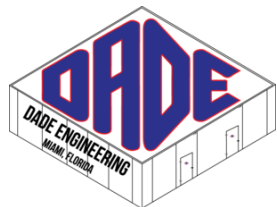


Right / Left Ends

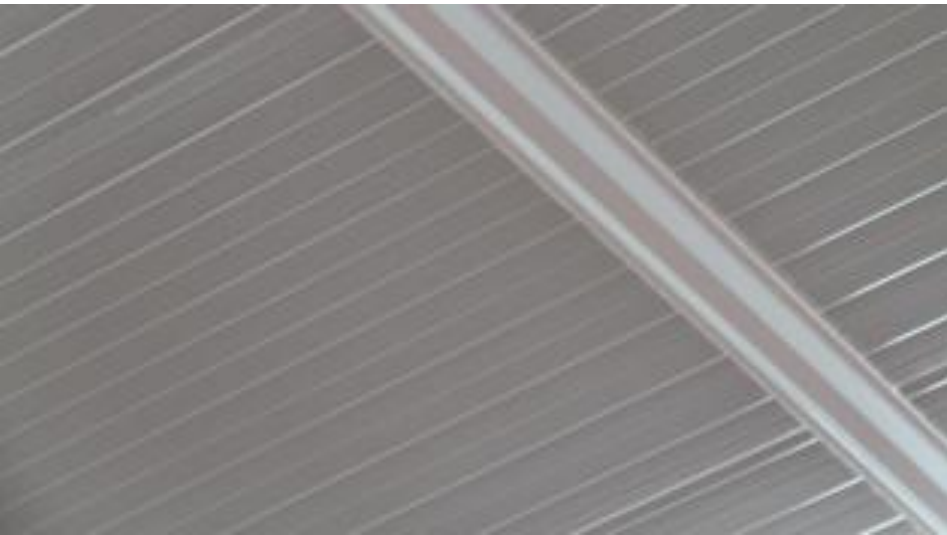


Synthetic Screw

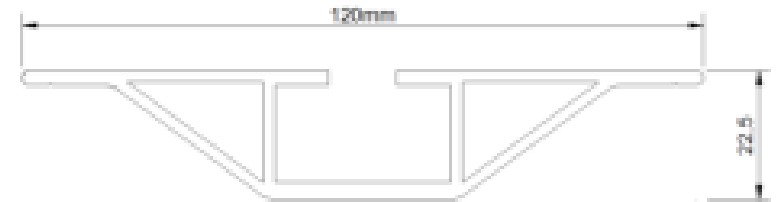
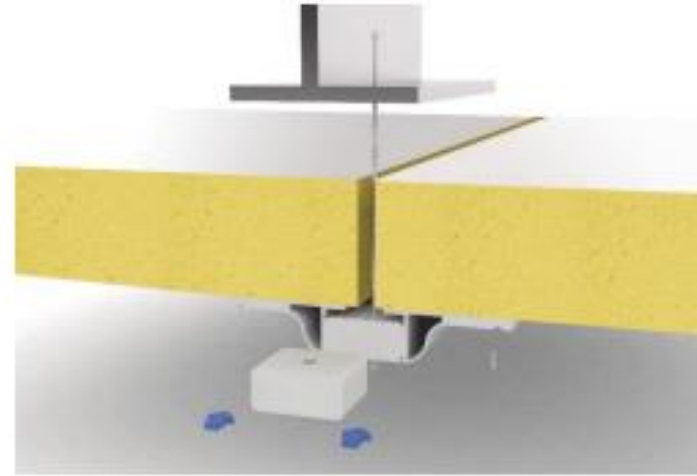
[www.dadecoolers.com](http://www.dadecoolers.com)



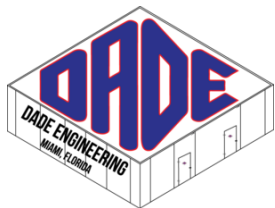
# CEILING ACCESSORIES



## Ceiling Attachment, Longitudinal (Length wide) Suspension



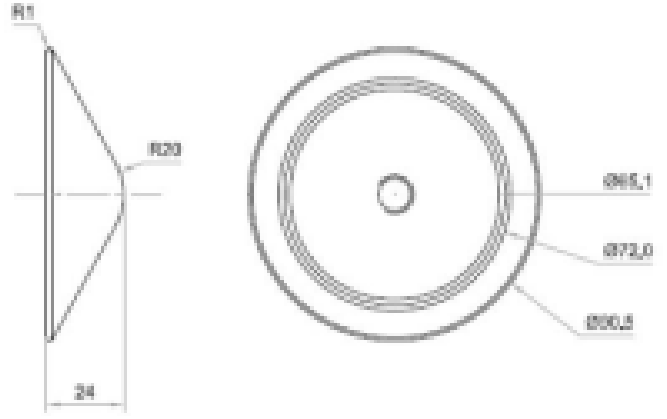
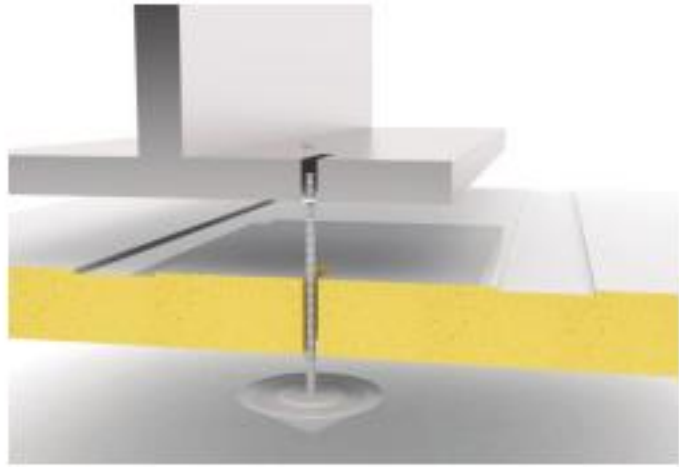
[www.dadecoolers.com](http://www.dadecoolers.com)



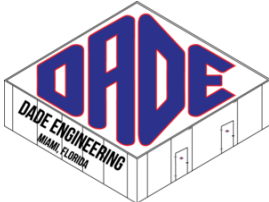
# CEILING ACCESSORIES

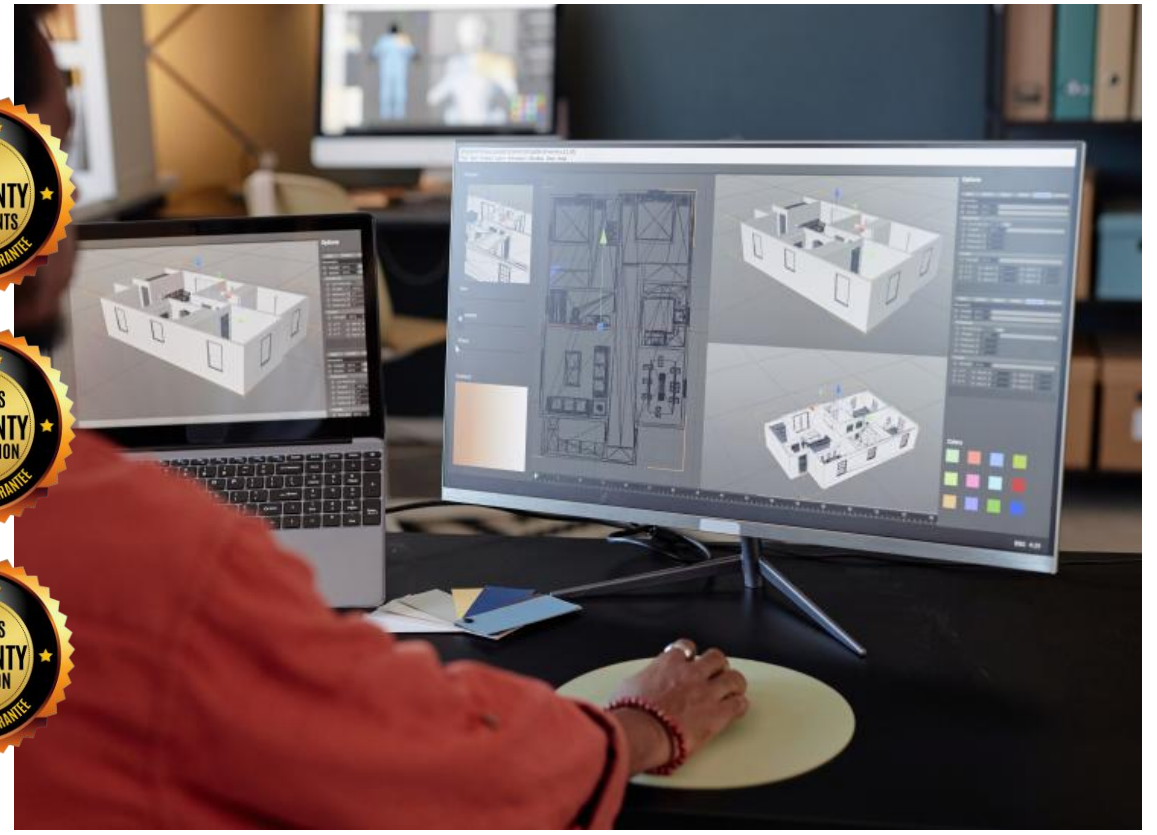


## Ceiling Attachment, Point Suspension



[www.dadecoolers.com](http://www.dadecoolers.com)

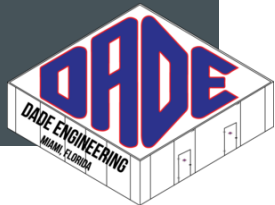




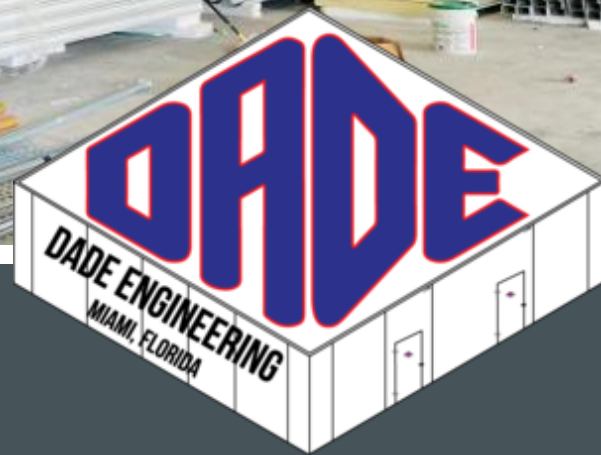
## DADE PANEL WARRANTIES

- **1 year** warranty on hardware components.
- **10-year** warranty on panel construction. (NOTE: does not include labor)
- **50-year** warranty on foam insulation.

[www.dadecoolers.com](http://www.dadecoolers.com)



*“Full Service Cold Storage Panel  
Manufacturer Since 1953”*



Connect with Dade

7800 NW 37th Avenue, Miami, FL 33147  
Hours: Monday - Friday | 7am - 4pm  
TOLL FREE: (800) 321-2112



[www.dadecoolers.com](http://www.dadecoolers.com)

© Copyright 2025 | All Rights Reserved